

Chaddleworth News

In this new edition...

- ✓ Action and events led by and supporting our community
- ✓ RAF Welford Memorials' history
- ✓ A Seasonal Honey Pot Update
- ✓ News, pictures, information and advertising from the people and organisations local to Chaddleworth

We hope you have had a good summer break and enjoy reading the new bumper edition of Chaddleworth News.

Downland Volunteer Group Handybus

The Downland Volunteer Group runs a 13-seater mini-bus service supporting the downland villages. It offers a door-to-door service for shopping trips and other club events with regular trips each week that are delivered by popular demand. **The trip that runs to Chaddleworth is in danger of being withdrawn** at the present time because of dwindling passenger numbers.



Come and join the Handybus



If you, or anybody you know, may benefit from using the service, then please pass on the details and we will be glad to try and accommodate them. If passengers require help with shopping on and off the bus the driver will be happy to oblige. The details are as follows:

Route	Peasemore, Leckhamstead, Chaddleworth , Brightwalton (as needed)
When	Friday Afternoons (Fortnightly)
Time	Sets off 1:30pm arriving... Chaddleworth 2:00pm (approx.)
Destination	Sainsburys in Wantage 1 hour (approx.) to shop
Cost	£4.00 Return Fare
Booking	Call Handybus Coordinator 07561 825 302 Or Email dvq.handybus@gmail.com

The volunteer group is always looking for new volunteer drivers for the Handy Bus as well. If you or somebody you know could spare a few hours occasionally to drive one of the regular routes, then please contact The Handybus Coordinator whose details are listed above. Full training will be given to all new volunteers.

Chaddleworth Afternoon Club Macmillan Tea Party



We will be holding a tea party this year to contribute to Macmillan Cancer Support's World's Biggest Coffee Morning Campaign.

This will be on **Saturday 2nd October** in the **Village Hall**. We will be open from **2:30pm until 4:00pm**. Entrance including tea and cake will be free but we hope you will spend some money on raffle tickets, gift items and donations.

We need donations of cakes (to eat and sell) and raffle prizes. These can be left with me (28 Nodmore), Phyllis Bibbings (Monks Orchard) or Diane Crocker. Better still why not come along and bring them with you to the Village Hall.

Pat Tranter, 01488 638066

**MACMILLAN
CANCER SUPPORT**

Chaddleworth Entertainments

Chaddleworth Entertainments will be holding an AGM and event planning meeting on **Monday 13th October** in **The Ibex** at **7:30pm**. All are welcome and it would be good to see new faces. The main agenda item for the meeting will be the Platinum (70 years) Jubilee, the 4-day June 2022 Bank Holiday and what sort of event we should have to join in with the celebrations.

For those new to the village, Chaddleworth Entertainments was set up in 2014 by a group of villagers who wanted to bring people together to have some fun. Over the years this has included pop-up pubs, Easter Egg Hunts, Summer Fêtes and festivals, and support for other events such as the Harvest Auction and the Terrier Dog Race.



SCAN ME

www.chaddleworth.net • chaddnews@gmail.com

Co-Editors: David Jennings & Grahame Murphy. Distribution Team: John Ballard, Andrew & Ruth Lee, Ray Doncaster, Joe Mills, Grahame Murphy, Christine Patterson, Sue Ridgeway. Printing costs are paid for by Chaddleworth Parish Council.

Electronic colour eCopy available on the village website

The History Bit

This month's inclusion, as kindly suggested by one of our readers, is information about the Memorial Grove at RAF Welford which lies to the east of the entrance to the Main Gate and can be clearly seen from Hangman's Stone Lane.



This Memorial is maintained by Members of the Ridgeway Military and Aviation Research Group (RMARG) and Friends Family and Veterans of Welford (FFVW) who meet at RAF Welford Museum every Wednesday. The memorials are plaques in brass mounted on sarsen stones (the orangey/brown stones abound in this area and were moved here in the last 'ice age') and were dug up on the Base.

Memorial 1 commemorates the 50th anniversary of the opening of RAF Welford in 1943 and the dedication of this grove of mixed British and American trees. Also to the memory of all those personnel of the RAF and the United States Army Air Force and US Air Force Europe who served at this base 1943-1993 (Welford Fifty Committee June 1993).

Memorial 2 is RAF Welford 60 years of service 1943-2003.



Memorial 3 is the Millennium Dedication RAF Welford 31st March 2000 to American and British military and civilian personnel who served at Welford. *"From Americans to British citizens, special thanks for your generosity, hospitality and friendship during our tour of duty. World War 2 veteran's special appreciation to all, your dedication to duty and sacrifice contributed to a free Europe. Friends of Welford"*.

Memorial 4 is the Cold War Memorial July 2005.

Memorial 5, 6th June 1994, is dedicated to the memory of the men who sacrificed their all for the cause of freedom. 435th Carrier Group Troop, 75th 76th 77th & 78th squadrons & group Head Quarters. ETO-MTO-WW2 campaigns Normandy, Northern France, Ardennes, Rome-Arno, Southern France, Rhineland, Central Europe RAF Welford 1944-1945 United States 9th Troop Carrier Command.



Memorial 6 is a Memorial to the crew of Avro Lancaster DV 290 – an ABC equipped aircraft of 'C' flight 101 Squadron RAF Ludford Magna (Yorkshire) who died when their aircraft crashed on this airfield during the early hours of the 31st of March 1944 whilst returning from a raid on Nuremburg. Flight Sergeant EC Thomas RAF, Sergeant DA Addy RAF, Warrant Officer AN Rice RCAF, Flight Sergeant AH Wilson RAAF, Flight Sergeant IR McNay RCAF, Sergeant DR Billson RAF, Sergeant RAJ Collier RAF and Flight Sergeant EH Traeger RAAF. This was a 'special' aircraft with 8 crew (usually only 7), one of whom spoke fluent German and could listen in on the Luftwaffe and also send confusing messages on the airwaves. There are many conjectures as to why they crashed but no one really knows. We have a Memorial Commemoration each March the 31st at RAF Welford to honour them with both British and American service personnel in attendance. (Legend: (RAF) Royal Air Force (RCAF) Royal Canadian Air Force, (RAAF) Royal Australian Air Force)



Memorial 7 commemorates the 75th anniversary of the D-Day landings USAAF service and civilian staff who were stationed at RAF Welford Park station AAF-474 whilst supporting Operation Overlord June 6th 1944.



Finally, Memorial 8 is in memory of John and Kathleen Stephens of Leckhampstead for their life long support and friendship to RAF Welford and the 'AMMO Community', laid November 2011. **Grahame Murphy**

St Andrew's Church, Chaddleworth

part of the West Downland Benefice

This has been a summer of celebrations with weddings and christenings across the West Downland Benefice. Many people have found the opportunity to gather in numbers, and to sing together, deeply moving after the isolation and anxiety of the past year and a bit. In Chaddleworth the church looked at its very best with wonderful flowers, music from Revd Mary and bell-ringing for the wedding of Jono and Louisa Cooper. We have also welcomed families who had been unable to gather together to remember loved ones who died during the months of lockdown. The family of Gay Hall met in Chaddleworth churchyard to inter ashes on 1st August and the family and friends of David Vince will remember him in a service led by Revd John Townend on **Tuesday 14th September**.

In order to remain available for these family events the church has undergone some maintenance including servicing of the bells, a new cover and pumping out for the boiler pit, and the never-ending task of sweeping away bat droppings and dry leaves. Many thanks to our dedicated volunteers particularly the Tower Captains Ed Dempster and Peter Birtwistle, Michael Ridgeway (for the new hatch cover), Henrietta Fraser for organising the tanker and Sue Ridgeway for daily locking and unlocking of the church so that it is available for all.

Sunday 5 th September		
5pm	Benefice Confirmation Service with Bishop Olivia	Leckhampstead
Sunday 12 th September		
8am	BCP Holy Communion	Brightwalton
10:30am	Matins	Wickham
Sunday 19 th September		
8am	BCP Holy Communion	Fawley
10am	Café Church	Great Shefford
10:30am	Open Air + Holy Communion	Welford
Sunday 26 th September		
8am	BCP Holy Communion	Leckhampstead
10:30am	Open Air + Holy Communion	Brightwalton
Sunday 3 rd October		
8am	BCP Holy Communion	Brightwalton
10:30am	Open Air + Holy Communion	Chaddleworth

The Churchwardens meet on the 24th September to establish a pattern of services for the final quarter of 2021. For now, we shall continue to meet in the open air whenever possible. To receive weekly updates of church news and information about all services contact **Sue Ridgeway** to subscribe to the West Downland Benefice weekly email.

Revd Miri Keen

miri.westdownland@gmail.com 07954 117093

Leckhampstead WI

Leckhampstead Women's Institute (WI) have some vacancies for new Members.



We meet on the second Wednesday of the month in Leckhampstead Village Hall from 2:30 until 4 o'clock.

Meetings open with the Chairwoman's welcome and any announcements. She then introduces a speaker who talks for approximately ¾ of an hour and is followed by tea. We have different speakers each month who talk on a variety of subjects which are very interesting and entertaining.

If anybody would like to join and would like more information, please telephone **Phyllis Bibbings** on **639346**.

Alzheimer's Society

Unfortunately, my skydive has been delayed because of bad weather. The new date (all being well) is 17th September. This 15,000 feet skydive is in aid of the **Alzheimer's Society**, a charity not only very close to my own heart but I'm sure to many others as well. Thanks to great support already, I'm hoping to raise over **£1,500** for the charity. If anyone further would be kind enough to be able to make a donation online, please search my name on the 'JustGiving' website or use the link below. Thank you so much for your support! **Rhianna Eeley**

www.justgiving.com/fundraising/rhianna-eeley



Shefford Young Farmers

Shefford YFC have been meeting in person over the last few months, making the most of the light evenings. We have had a range of meetings including a walk along the Ridgeway, learning how to brick-lay and taking part in the County Country spotters' competition at the end of July. We have recently had a meeting at a local farm looking at the wild flower meadows on the farm.



Our members have also taken part in a County Kwick Cricket competition, which they won and are now going forward to represent Berkshire YFC at the National YFC Finals in October.

We are returning from our summer break on Wednesday 8th September 7:30pm to 8:30pm at Brightwalton Village Hall for a pizza evening. YFC is open to anyone who is aged from 10 to 28 and you don't have to be from a farming background – just have an enjoyment of being in the Countryside.

If you would be interested in joining the club, please contact Shefford YFC on sheffordyfc@hotmail.co.uk

Downlands Ward Councillor News Sheet

The regular Councillor's Report is available via the West Berkshire Council website:

www.westberks.gov.uk/chairmansparishcouncilreport

Kind regards, **Councillor Clive Hooker**

Chaddleworth Village Hall

We held an Open Afternoon on 25th July for Parishioners to see the repairs and renovations made to the interior of the Hall. We would like to thank all those who visited and left a donation for the maintenance of the Hall which amounted to **£59**. Our Maintenance Day was held on 22nd August mainly to creosote the outside of the Hall, the gate and roadside barrier. As well as the Committee helping, we would like to extend our thanks to the following volunteers: David Jennings, Robin Fishlock, Sharon Linneman, Steve Lett and Grahame Murphy.

Laura and Kate from Ecology by Design visited the Hall after we had the 'three-bat-incident'. They had ladders with them and were able to remove some ceiling panels and look around with their torches. Some bat signs were identified and they were able to move some insulation material to close off the gaps. Laura and Kate thought that the bats were from the maternity roost that was located last November and maybe they 'lost their way' and found themselves inside the Hall. Thanks again to Rhianna for reporting finding the bats.

We have bookings for the months ahead so please book ahead to ensure the availability of the Hall for your children's parties, family events and any other functions by contacting **Chris Jordan** on **01488 638149**. For any other issues about the Hall please contact **Heather Murphy** on **01488 638628**, or botmoorway@btinternet.com

100 Club

The winners of the 100 Club draw for July are Janet Dumelow with her lucky number 79 and Anne Egerton with her lucky number 18. They both win **£43**. The winners for August are Ivor Ching with his lucky number 37 and Henry Ponsonby with his lucky number 70. They both also win **£43**. We are now at 86 Members so thank you one and all.

This 100 Club supports the Village Hall in ongoing costs that are ever increasing (insurance, repairs, maintenance etcetera). The Club has just bought a new fridge (£219), replaced some wooden panels and provided wood preservative and brushes for the Maintenance Day.

The 100 Club is a vital source of income for the Village Hall especially during 'lock down' where no income has been possible. It is really worthwhile being a Member to keep the Village Hall going and we implore every villager to join. Please contact **Grahame Murphy** on **01488 638628** or email botmoorway@btinternet.com

How do I join the 100 Club?

With "internet banking", set up a standing order for £2 per month (one number) or £24 a year. Payable to Recipient '**Chaddleworth 100 Club**', Sort Code **62-28-74**, Account No **00000000** (eight zeros), Reference **2856684010**. Alternatively, you can let me have a cheque or cash just contact me. Email Grahame Murphy to let him know you have joined and get your allocated lucky number.

History of Chaddleworth Village Hall

The original structure was erected in 1897. This was a wooden sub-frame clad with corrugated iron and was called the Iron Room. In 1944 it was decided by the Trustees to apply for Charitable status. It was to be used as a '*Parish Room/Village Institute for the purposes of physical/mental training, recreation, social, moral, and intellectual development. For the benefit of the inhabitants of the Parish of Chaddleworth and its immediate vicinity*'. It was accepted as a Charity on the 31st July 1945.

Historically, the Village Hall was used for a variety of events. There was a Men's Club, the WI and Mothers Union also used the Hall, dances in conjunction with RAF Welford were held there. Before the advent of the current Cricket Club the cricket field was just beyond the old Vicarage and teas were provided in the Village Hall. It was also used for the annual school concert.

Since the Second World War and the advent of the welfare state (full free education, national health service) the Village Hall has developed into a meeting place for village events. The Chaddleworth Village Hall is a charitable community hall run by a management committee representing users and elected members of the public, who are the managing trustees of the charity.

In 1996 the Hall underwent a major refurbishment costing £36,000 to include replacing sub-frame, re-cladding the entire outside with new wood, replacing the roof, toilets, kitchen, windows and doors. In recent years a new heating system has been installed, the roof void re-insulated, a new floor and a new kitchen fitted – all financed by local grants, the 100 Club and donations.

The Hall is hired by a range of voluntary organisations, private individuals and statutory organisations for a variety of activities, some of which are licensable.

Non-licensable activities include: Parish Council meetings, Village Hall Committee meetings, Downlands Gardening Club, Bingo, Bring-and-Buy, Parliamentary and Local Elections, MacMillan Coffee Mornings, Jumble Sales, Cricket Club meetings, Private functions (weddings, parties etc.) and ad-hoc meetings.

Licensable activities typically include: playing amplified or live music at concerts or discos, singing and/or dancing in connection with club performances, fundraising events such as dances, discos, suppers, festivals and fetes, youth club activities, amateur dramatic performances, performances by visiting musicians or theatre groups, film shows for children and/or adults and occasional private parties or wedding receptions with bars.



Chaddleworth Cricket Club

*"The season sank
without a trace".*

The AGM will be in December at the village hall - date to be confirmed.



On the 26th June a raffle was held in The Ibex garden in memory of Ken Compton. The proceeds, in excess of **£500**, were donated to The Duchess of Kent Hospice in Reading.

Many thanks again to Gill and her team of ticket folders who had a big job, Nathan and all the staff at the pub for their patience, all the people who turned out to buy tickets on the day and all who donated a prize. **Gill Compton & Jim Wilson**

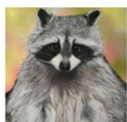


Open Studios

Artists in West Berkshire and North Hampshire welcome visitors to their Studios from mid-September to October.

**THE
BASE
Greenham**

The collective exhibition **INSIGHT 2021** will show at **The Base Greenham** 18th September to 10th October 2021 daily from 10am to 5pm. For full details of artists studios opening details please visit www.open-studios.org.uk



Great Shefford Under Fives

Pre-School, Tuesday, Wednesday, Thursday
9:15am to 2:45pm



As we prepare for the autumn term, we are delighted to share the good news that Morven, our Deputy Manager, has completed her two-year Forest School training with "Fruits of the Wild". The assessor complimented her work: *"you embed the Forest School ethos and principles into your daily practice, in the woods and at Pre-School to create a holistic and rich learning environment"*. We are very proud of Morven's success and the way in which our community Pre-School is constantly forging ahead with training for the benefit of the local children.

We wish our past pre-school children, who will be starting at 'big school' this month, every success in their new adventures at Shefford & Chaddleworth, Brightwalton, Wickham and Lambourn schools.



If you would like to see the wonderful learning experiences the children have received, please log on our Learning Diary on our website www.greatsheffordunderfives.co.uk

Enrolment of children to start in September 2021: If you have a pre-school child and would like to enquire about a place, please do not hesitate to get in touch. We accept children from 2 years and 9 months and look forward to meeting you.



Baby & Toddler Group – Monday 9:30am to 11:30am

The Baby & Toddler group will re-open for the autumn term on **Monday 6th September**. We look forward to welcoming everyone back, to a new decorated village hall. If you haven't visited us before, please come along and let our staff, Morven and Debbie, make you most welcome with a cuppa, chat and plenty of activities. Please check our Facebook page or website for any updates. **Denise**

07765 508867, email denise.herrington@btinternet.com

Chaddleworth Photos

With thanks and recognition to Dianne Taylor who contributed to the Chaddleworth in Colour album on Facebook, the following are older images from Chaddleworth.



The Post Office, which is now Spray Cottage, was run by the Hadlands – who are remembered in the Memorial Garden (see April 2021 for more detail).



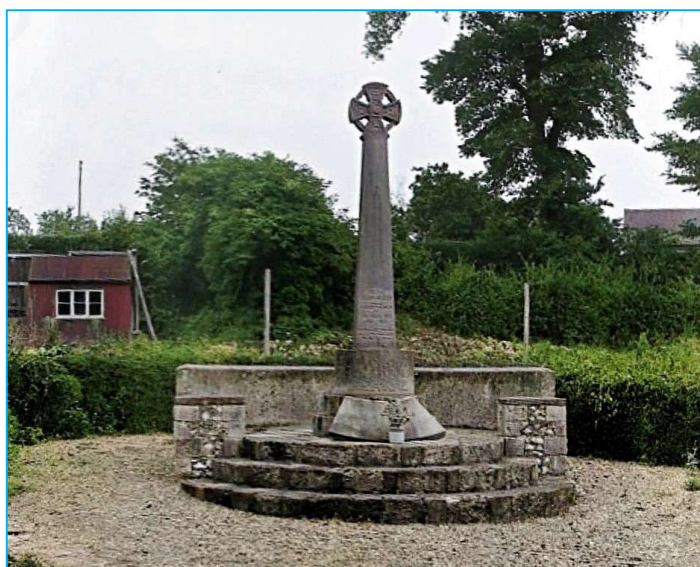
Looking over the pond (now the Hadland Memorial Garden) towards the War Memorial and onwards up Main Street (west).



Looking from the War Memorial south down Sheephouse Way. The thatched cottage on the left is now superseded by Lamorna and Simonds House.



Looking from the War Memorial up Main Street (east) towards The Ibez.



The exterior and interior of St Andrew's Church and the War Memorial.

The Berkshire Honey Pot Seasonal Update

What a year! This has been an incredibly tough year on the bees and I hear this from all around the UK on beekeeping forums. The weather through the spring was not great. During February and March the queen starts laying prolifically to ensure a strong colony ready for the flow, between 1000-2000 eggs a day. This is a time when it is generally not ideal to inspect the hives due to the weather, so it is a case of a bit of watching, hefting and educated guesswork as to how they are doing. If you get a warm day then inspections can be done. But this spring was terrible, the weather was awful, and so when the colony would normally be out feasting and building reserves for the large population, the weather turned. Fruit tree blossom coincided with poor weather and the bees stayed in. No supers were put on for honey for the beekeeper and in fact I was having to feed my hives at various times right the way into late June and July.



The colony size as you get into spring is around 30-60,000 bees and that is a lot of mouths to feed. At the same time getting inspections done was a real challenge, the weather just stopped it. When I did manage to inspect my five hives three were without a queen and two were really weak in numbers despite feeding. No queen means no new

bees to replace those that die out following the winter. The answers to queen-less colonies are myriad, here are some options: Put in a frame of eggs from another hive and they will try and make a queen from an egg or two by feeding it royal jelly and sealing. No joy for me as my queen-right hives were a different size frame, so not an option. Combine a hive with another to just double them up, but you still have one less hive at the end. Buy a queen online, duly sent via the normal post in a cage with a few workers. Or get lucky with a swarm and combine. Swarms for us in Chaddleworth were light this year. So I bought a queen, managed to get one swarm and combined and worked through it.



Introducing queens is not easy, you have to get the colony used to the new queen before you release her. You do this by leaving her in the cage with food in the hive and then allow a slow release after a couple of days. However, for me by the time the queen arrived the hives were desperately low in numbers. Queen breeding was also delayed by 3-4 weeks this year due to the weather. My introduction was unsuccessful and we lost the hive. And now I am battling wax moths in the empty brood boxes, and a very early attack of wasps on one of the less strong hives.

One of my hives did prepare to swarm and created quite a few queen swarm cells. So, I cut some out and put them into two hives, and one took which is great. The sum total of all this was only one hive produced excess honey and gave us 30kg of spring honey. I also suspect that is about what we will get from summer as well. And really this year has been a battle to just keep the hives alive and in good strength. This is food farming and it is unpredictable, but it is just a hobby, I do feel for those for which it is their job.

This year I also had an inspection from the DEFRA bee inspectors. They are looking for disease – the particularly dangerous and reportable ones being European or American foul brood. Others, such as Varroa, sac brood, bald brood are also looked for. A few years ago an apiary around Lambourn had foul-brood, the hives are typically destroyed by fire and then hives in ever further concentric circles are inspected, and this continues typically annually for quite some years. We are out of reach of Lambourn but this sensible practice goes quite far. My inspection was fine, as it has been for the last three years and it is always good to go through the hives with these very experienced seasonal inspectors. Inspection are made by agreement, but just to say they don't need our permission nor do we need to be there, they are allowed to just turn up and do them without permission, we cannot refuse. I actually see them as beneficial and a good learning tool.

Back to 2021, our honey stocks are low. In fact for the first time ever, pre this year's harvest, we ran out of all honey and I suspect we will do again before next season. But for the moment the spring honey is available and is really delicious and different to previous years as there was little oilseed rape around, which normally dominates with other brassicas. August has not helped; the weather has not been great so we will have to feed hard after the supers are off and give them a good stock for winter to combine with the ivy flow if it comes strong. **Nikki and Colin**



Chaddleworth St Andrew's and Shefford C.E. Federated Primary Schools



Back to school! And we are back to school with more of the 'normal' routine which is fantastic! We are so excited about welcoming the children back and also welcoming the new children in.

We have so much planned for the children already. We take the Red Kites away to The Manor in Shropshire on their long-awaited residential trip at the end of September so they will be preparing for the many exciting challenges ahead. Remembering to brush their teeth at bedtime will be one of them!

We have Lucy from Lambourn dental surgery coming to talk to all the children about caring for their teeth. Learning about oral health is an addition to the new Early Years Statutory Framework which is great to see, particularly as Lucy has been visiting us regularly for some time now! We are also thinking about recycling during 'Recycle Week'. This will be child-led as the children decide what they would like to focus on, plan how to achieve a specific goal and consider the impact of their actions.

Our Christian value this term is '**Courage**', chosen because we start a new term, possibly a new class, possibly a new school and sometimes we need to be courageous when facing change. We think of the example of Jesus as he calmed a storm and are reminded that we can find strength in many ways and from many sources. The Learning Power '**Don't give up**' also reminds us that, even when things get difficult, we need to rise to the challenge. Over the next few weeks, we will be looking for examples of this in our everyday school life. We will let you know how we get on!

Check our website for details of our open day events for new starters in 2022.

And we are pleased to relay news from the end of last term too: We had a fantastic Sports Day. The children were so focused as they participated in the activities and it was such a pleasure to have parents on site in the afternoon. Jayson, the Sports Leader, along with Teddy did a brilliant job of planning the morning activities, setting them out and explaining them to the children. The House and Shadow Captains gave their houses an inspiring speech about the importance of having a go, thinking of the feelings of others and trying their best. And the children showed such endurance and compassion throughout the day!



Merci à toute la semaine française était magnifique! Yes, French week was *magnifique*. Red Kites learnt a range of greetings and were able to role play buying ice cream in a shop. Owls learnt how to say some foods in French, Connor told me the French word for lollipop is *sucette* and Frankie remembered *l'eau* for water. Kingfishers learnt colours and Jess told me that her Dad's favourite colour is *vert* and Alex

said his favourite colour was *bleu*. Kingfishers were also treated to a reading of the *The Three Little Pigs* ('*Les Trois Petits Cochons*') read by Darcie's grandmother. Robins learnt numbers to 10, songs and rhymes – and even listened to the story of *The Hungry Caterpillar* ('*La Chenille Qui Fait des Trous*') in French. *Merci beaucoup Madame Wilson et Madame Chrimes*. Here are some examples of what they can now say:

"I can say that my favourite ice cream is - *chocolat!*" *Samantha*

"I know *bleu* is blue and *rouge* is red." *Alex*

"We listened to 'The Hungry Caterpillar' in French. We can count up to 10." *Henry*

"*Poisson* is 'fish' in French." *Rosie*

I would also like to take the opportunity to say thank you to everyone who has supported us through another challenging year. Thank you to the staff, parents, governors, community and of course, the children! **Alison Stephenson, Headteacher/DSL, 01488 648657, www.csfschools.org**



The Ibex Inn

A Big Hello from everyone at The Ibex Inn!

We hope you enjoyed your summer holiday with life almost back to normal!

We have been super busy here at the pub with weddings, events, our new menu and cocktail night! Thank you to everyone who has been supporting us over the last few months – we are so lucky to have so many great locals.

What's Coming up in September?

Mexican Night: 24th September – keep an eye on our Facebook or Instagram page for more info

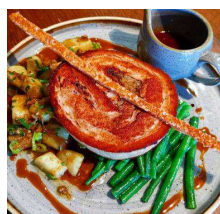
Real Ales: Last Month's *Beer of the Month* Real Ale Winner was The Bristol Beer Factory. Check our *Ale Battle Board* for the next month's contenders.

Loyalty Discount Card: we are launching an *Ibex Loyalty Card* in September. To be eligible to receive discounts, sign up to our mailing list at www.ibexinn.com

Cocktails: We have now launched a brand-new *cocktail menu*. From our signature Watermelon & Strawberry Mojito to a classic Cosmo & Margaritas, come in and choose your favourite.



We are open 12 noon to late, 7 days a week. Email enquires@theibexinn.com or call **01488 639052 Gavin, Nathan and The Ibex Team**



The Downland Practice

Updates can be found at the practice website news section
www.downlandpractice.nhs.uk



COVID-19 Vaccinations: If you require a first or second dose vaccination, please visit the NHS vaccine booking site or call 119 to arrange an appointment at a mass vaccination centre.

<https://www.nhs.uk/conditions/coronavirus-covid-19/coronavirus-vaccination/book-coronavirus-vaccination/>

Anyone **aged 16 or over** can now book their Covid-19 vaccine appointment. Thank you to everyone who has already taken up this opportunity. Appointment slots for first and second doses are available at all vaccination sites. If you can't find a local slot straight away, keep trying as more appointments are added regularly.

Self-isolation: From 16th August, anyone who has been identified as a close contact of a positive Covid-19 case no longer has to self-isolate, providing they've been fully vaccinated and aren't displaying any Covid-19 symptoms. All close contacts, regardless of vaccination status, are advised to take a PCR test as soon as possible. Double vaccinated people identified as close contacts are still at risk of being infected and are advised to consider other precautions such as wearing a face covering in enclosed spaces, and limit contact with other people, especially with anyone who is clinically extremely vulnerable. Anyone who tests positive following the PCR test will still have to self-isolate, regardless of their vaccination status or age.

Downland Volunteer Group (DVG): are looking for more staff who can undertake transport tasks for patients. We are struggling to get some patients to hospital, and would like to have some new younger drivers who can help out this cause.

National Shortage of Blood Bottles: You may be contacted by your GP surgery to postpone your upcoming blood test appointment due to a national shortage of blood bottles. Certain tests will still need to be carried out due to monitoring of certain medications, but others will be postponed until a later date. We are sorry for any inconvenience caused but this is out of our control.

Flu Vaccinations 2021/22: We are now in the process of contacting eligible patients to arrange flu vaccination appointments. Please await your appointment letter in the post. We are working with Strawberry Hill Medical Centre and Eastfield House Surgery to deliver the vaccination program and all flu clinics are being held at the Royal British Legion, Newbury by appointment only. During your

appointment, you may also be offered a COVID-19 booster but the program for COVID-19 boosters has not yet been confirmed. We will let you know on the day. More information on the clinic, including the venue address and parking details will be included in your appointment letter. Please do not call us to book an appointment. Please wait for us to contact you.

GP Partner Leaving: Dr Haider will be leaving the Downland Practice in Mid December 2021. We will be very sad to see him leave the surgery where he has been a GP Partner since September 2016.

Registered GP: The Downland Practice have recently undertaken a patient relocation of registered GP. The reason for this is to balance out the number of patients that each GP has to look after. On average the GP's at the Downland Practice have 1730 patients per full time GP. If we have a GP who has too many patients in relation to their work pattern, their work load will increase greatly, this is unfair for both the GP and availability for patient appointments. Patients who wish to change their GP should use the available form to apply to the practice for consideration. Children are registered with the same GP as their parent/guardian.

Downland Pharmacy: The Downland Pharmacy has completed the essential works and have back in-situ following their temporary relocation in the carpark. The Practice Manager has reported no complaints about the move and generally there have not been more than 5 patients waiting to be seen at the pharmacy during peak times. The pharmacy team have done exceptionally well

Compton GP Clinics: GP clinics will resume at Compton 14th September 2021, initially these will be on a Tuesday morning. There will be times when we have two GP's working from Compton, one of these GP's will be the Duty Doctor. On days where the Duty GP is working from Compton, patients who need to see the Duty Doctor will be seen at Compton.

Chaddleworth Hardship Fund

The charity was enacted in 1813 to provide fuel and 'necessaries' for the people of Chaddleworth Parish. This charity has now been updated to become the Chaddleworth Hardship Fund.

The Trustees of this fund (the Parish Council) would like to help the village during this unprecedented pandemic. If you find yourself in financial difficulties, please apply to the Parish Clerk by email to chaddleworth.pc@outlook.com and the Trustees will look at your application (in strictest confidence) and may award financial help. **The Trustees**

Chaddleworth Parish Council

Parish Council Meetings are back to 'face to face' in the Chaddleworth Village Hall. Please do come along to the PC Meetings and air your views. The next meeting is **Tuesday 7th September 2021** at 7.30pm. For the minutes from past meetings of Chaddleworth Parish Council, please visit www.chaddleworth.net. If you have any matters for the Council, please contact the clerk via email chaddleworth.pc@outlook.com

Trindledown Farm – National Animal Welfare Trust



Trindledown Farm has reopened! From Tuesday 24th August, the farm has reopened for visitors. Tuesday to Sunday, 11am to 4pm, with our onsite café now open as well Wednesday to Sunday.

Come visit and explore the rescue centre, feed the alpacas and sheep, buy something nice from Trindledown Treasures or stock up on pet food from Smithy's, paint a pebble and leave it at memorial gardens, see the colourful guinea pig village and give the dogs and cats a treat! You can even grab an ice-cream and watch famous Barry the pig as he goes about his day.

We open up the farm to encourage people to wander around the centre and spread awareness of the work we do. To help support the animals, entry to the farm is via donation that can be paid at reception.

Your support is vital to the caring of hundreds of unwanted and homeless animals that need help – please come visit and have a great day out at Trindledown.

With our reopening we are also excited to announce that we have been able to reschedule our car boot sale and dog show. Our first in-person event will be on 26th September. We can't wait to see you here. Save the date and pitch up at Trindledown to sell off some stuff from those lockdown spring cleans!

Don't forget our onsite shops and online Smithy's are still open. www.nawt.org.uk/centres/berkshire

Saunders Wynn and Coventry Educational Foundation

One of the Trustees has visited the Berkshire Records Office to peruse some historical documents. These have revealed that Vicars in the past have had to sell parcels of land in the Parish to finance the Church and its educational responsibilities. In 1920 the Vicar J. Douglas Lord sold parcel number 121 (to the west of Norris Lane) for £425 to support the Vicarage and the School.

The three named benefactors set up the Trust to offer financial help to further the educational needs of the children and students (up to the age of 25) of the Parish of Chaddleworth. The Trustees meet four times a year with the next meeting scheduled for **16th November** to consider applications including any relating to the additional costs of home-schooling and remote study for students. Previous contributions have been made towards the cost of school uniforms, books for university courses, specific equipment and kit for courses, and residential courses.

If you wish to apply for funds please contact the Foundation's Clerk, **Heather Murphy**, Tower Hill Cottage,

Botmoor Way, Chaddleworth RG20 7EU or email botmoorway@btinternet.com for an application form. All applications are treated in the strictest confidence. Any applications received after 16th November will still be considered for awards by the Trustees but there may be a delay before awards are made.

The Naughty Step

If you witness any unacceptable behaviour, please **call 101** or let the Parish Council know (in confidence).

- Please take care and keep everyone safe and well – especially in these unusual times.
- Demonstrate and expect responsibility – from your friends, your family, your neighbours. If you wouldn't like it, then no one else will either!
- Don't drop litter - if you see some, please tidy up. Pick up your dog's mess and dispose of it in the correct bins or at home.



The Hungerford & Downlands Neighbourhood Policing Team held a *Rural Have Your Say* event in Chaddleworth Village Hall on Saturday 7th August. The local West Berkshire Neighbourhood

Watch report also of an attempted traveller site in Cold Ash/Thatcham (Lawrence's Lane). Please stay vigilant. For more information about West Berkshire Neighbourhood Watch, advice on avoiding scams, future meetings and to keep updated on the latest incidents, follow the 'West Berkshire Neighbourhood Watch' Facebook group, visit www.westberksnhw.wixsite.com/home or email westberksnhw@gmail.com

Bus Shelter: The damaged slates have been repaired. Please don't vandalise the Bus Shelter – it is maintained only by the commitment and good will of the local villagers.

Dogs on leads please: Following two recent unfortunate incidents involving personal injury, the police, and consequences both for the dogs and their owners, we are asked to remind that dogs should be kept under control at all times and on leads in public areas. Under the Dangerous Dogs Act, dogs must not be allowed to be dangerously out of control (injuring someone or making someone fear they may be injured) and the owner risks fines, disqualification from pet ownership, prison and worst of all the destruction of their dog. Please keep your dog under control, on a lead near roads, car parks, play areas, other public spaces and where livestock is present. Positive reinforcement training classes are also highly recommended to ensure you, your dog and others can enjoy being around each other in outside spaces.

Please send articles, letters and announcements for the next edition of **Chaddleworth News** to chaddnews@gmail.com by **20th September 2021** Go well





NATIONAL ANIMAL WELFARE TRUST

CELEBRATING 50 YEARS

CAR BOOT SALE & DOG SHOW

SEPTEMBER 26TH 2021
9.30AM-1.30PM

NEW DATE

PITCH FEE - CARS £10 VANS £12

SELLERS ARRIVAL BETWEEN 8.30-9.30AM

NO NEED TO PRE-BOOK, JUST TURN UP!

TRINDLEDOWN FARM, GREAT SHEFFORD, RG17 7DQ

ALSO FOR SALE FROM TRINDLEDOWN
CLOTHES • BOARD GAMES • BRIC A BRAC • PET ITEMS

DOG SHOW 11.15AM-1PM

ROSETTES & GOODIE BAGS FOR 1ST-6TH PLACE

**ENTRY FEE
£2 BEFORE 11AM
£1 AFTER 11AM
UNDER 14S FREE!**



SCAN ME
FOR DOG SHOW
CLASSES



01488 638584 www.nawt.org.uk



Recommended Local Tradesmen & Advertising

To recommend or advertise please send details to chaddnews@gmail.com



Advertise in Chaddleworth News

To recommend or advertise local services, or to provide letters and announcements, please email details to chaddnews@gmail.com
This service is **free** of both charge and hassle!



Relevé Dance

by **Katherine Moore**, Glenn Miller Close

At Brightwalton Village Hall, PRE-SCHOOL Dance Class Monday afternoons, Ballet, Modern & Acro, Primary School Dance Classes Tuesday afternoons, Tap, Ballet, Modern & Acro. For more information and to book a free trial contact **07554 435737** or katherine@relevedance.co.uk or www.relevedance.co.uk

The Honey Pot

Chaddleworth honey for sale.

FREE local delivery. 8oz **£3** 12oz **£4.50** 16oz **£6**

Visit Purley Farm Stables, School Hill

or call **Nikki Hills** on **07917 131330**



Indigenous Brewery

Award winning ales from Chaddleworth.

Bottles and takeaways. Reusable 9-pint carriers. 18-pint pressurised kegs.

Find us via www.indigenousbrewery.co.uk

or call **01488 505060**



Rosie's Pet Care

Friendly & professional local business

Offering a variety of pet care services tailored to you and your pets, we put your mind at ease so you know your pets are getting the best care when you are not there. Fun, active group walks, pet sitting or visits in your own home, obedience training for all ages.

Call on **07827 324999** or email rosiepetcare@gmail.com

Plumbing & Heating Engineer

Fully qualified Heating engineer for OFTEC - Oil fired boilers, Natural Gas & LPG.

Boiler Installation, Servicing & Repairs.

Call **Les Evans** on **07831 453035** or **01488 608389**

or email lesevans441@gmail.com

Hounds & Doodles

Digital Pet Portraits - from £15

Find 'Hounds & Doodles' on Facebook

or email houndsanddoodles@gmail.com



Eggs for Sale

6 FOR £1.20

Paul James, 3 Norris Field **07795 255051**



Helen Fretwell

Silversmith & Jewellery Designer

Beautiful, handcrafted jewellery made to order to suit all budgets.

See the Facebook page

or call **07551 775500**



Delivery Food from Foxes Catering

Our weekly changing menu offers quality seasonal dishes, something for everyone delivered to your door. We also deliver afternoon teas, lunch and picnic boxes. As restrictions are being eased, we are resuming catering for all kinds of occasions.

Take a look at our website for loads more information www.foxescatering.co.uk or call **Nick and Karen** on **01488 638269** or **07787 891945**



Penny Post

Celebrating local life. Sign up to the free weekly Penny Post e-newsletter for local, positive news, events, jobs, recipes, recommendations & more. Covering: Hungerford, Marlborough, Wantage, Lambourn, and more.

Email penny@pennypost.org.uk or call **07768 981658**, visit www.pennypost.org.uk/compton-and-downlands-weekly-news/

The funky Noodle

Authentic Southeast Asian cuisine. Take away delivery – open daily 5pm to 9pm. Call **June and Annie** on **01488 639544** or **07502 166131**

32, Nodmore. Follow us on Facebook page 'Funky Noodles'



Accountancy Services

A professional and reliable accountancy service for Limited Companies, Partnerships, Sole Traders, Tax Returns.

Call **Kim Hedges** FCCA on **07771 392268**

or email kim@kh-accounting.co.uk

Makeup by Tish

Occasion & bridal makeup. Custom 1-2-1 lessons also available

'Makeup by Tish' on Facebook

or email letitia.slade@gmail.com